



Simplify your cyber risk scoring. Prioritize situational understanding. Optimize your cyber posture and resource allocation. It's time to revolutionize your cyber risk management with MARS Suite.

### Simplified Risk Scoring

MARS Suite translates enterprise cyber trends and risk management data into an easy-to-understand letter grade risk scoring format.

### Intuitive Dashboard

The MARS Suite dynamic risk scoring dashboard gives users a near-real time snapshot of the organization's overall cyber posture with the ability to see more details about risk scores, see enterprise score trends, or view scores and trends according to specific cyber domains and organizational units.

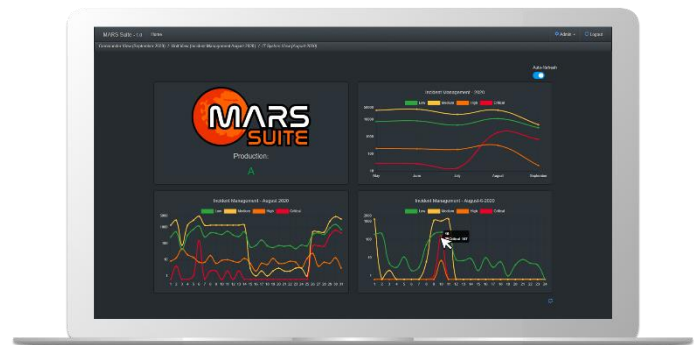


### Enterprise-Wide Actionable Intelligence

With unit-level and IT system-level views that provide unique information and functionalities depending on the cyber domain and organizational unit, security teams have access to actionable intelligence for the entire enterprise.

### Incident Management

Incident trends can be tracked by the month, day, and hour. Reports include event times, severity levels, asset criticality levels, and identification of affected assets, allowing for optimized resource allocation.



NSA NIAP Tested & JITC Approved



Available Now On  
DoDIN APL: 1832002  
NASA SEWP: Group D, NNG15SC25B



Deployment Type	MARS Suite	AT&T Cybersecurity	Nessus
	Cloud, On-Premises, or VM	Cloud or On-Premises	On-Premises
Asset Discovery & Management	✓	✓	✓
Vulnerability Scanning & Assessment	✓	✓	✓
Scan Scheduling	✓	✓	✓
Intrusion Detection	✓	✓	
Hardened Operating System	✓		
Compliance Alignment	✓	✓	✓
RMF	✓		
DFARS	✓		
GDPR	✓	✓	
HIPAA	✓	✓	
ISO 27001	✓	✓	
PCI DSS	✓	✓	
SOC 2	✓	✓	
CMMC	✓		
Threat Detection, Intelligence, & Alerting	✓	✓	
Basic Penetration Testing	✓		
Reporting & Dashboards	✓	✓	(Basic Reporting Only)
Asset Criticality Management	✓		
Continuous Monitoring	✓	✓	
Host Activity Monitoring & Analytics	✓	✓	
Automated Updates	✓		
Near-Real Time Data Analysis Support	✓		
User Seat Capability	Unlimited	Package Dependent	Package Dependent
Security Automation	✓	✓	